



**RICHFIELD
LUTHERAN
CHURCH**

ELCA
SOUTH MINNEAPOLIS

The R.L.C. Mid-Week News: 01/05/2022

*"Together we will BE the church by living out God's gifts
in the community and the world"*

8 West 60th Street, Minneapolis, MN 55419-2553

Phone: 612.861.2265 Website: www.richfield-lutheran.org

Richfield Lutheran Church Online & Phone Resources

CHURCH OFFICE

PHONE #:

612.861.2265

FAX #:

612.861.2266

WEBSITE & STAFF

E-MAILS:

<https://www.richfield-lutheran.org>

VIDEO WORSHIP

<https://www.youtube.com/channel/UCULV7ieJedcPUzrVjP120Mg>

AUDIO WORSHIP

612-474-4974

ONLINE RESOURCES & ZOOM LINKS

<https://richfield-lutheran.org/news-events/online-sermons.html>

FACEBOOK/ INSTAGRAM

Richfield Lutheran
Church, Common
Grounds, CELC,
Y-LIFE Youth,
Richfield Lutheran
Theater Company



Evangelical Lutheran
Church in America
God's work. Our hands.

WELCOME 2022 – Onward with Joy!

As The Richfield Lutheran Church moves into 2022, we continue to seek ways to be community with our neighbors. Although we live in liminal and often uncertain times – we continue to plan, prepare and gather in safe ways through worship and experiences that strengthen us in community with our neighbors through the year ahead. Here are

January highlights for your review:



JAN 15: Live the Legacy Martin Luther King Jr. "Day of Service" Cold Weather Kit Packing Event At RLC!

Join others in the community with a service event that honors the life and legacy of Dr. Martin Luther King, Jr. Together, people of all ages, are invited to pack cold weather kits for our neighbors. These kits will be distributed to those in need during the cold weather months. There will be a few speakers from the community and a special area for children to create "cards of kindness" to be packed

into each kit.

MASKS REQUIRED FOR THIS EVENT

DATE: January 15, 2022

TIME: 10:00 a.m. – noon

HOST LOCATION: Richfield Lutheran Church – Fellowship Hall

WHO SHOULD ATTEND: This event is for all ages and all abilities

*****Key Note Speaker: Andrea Jenkins, Minneapolis City Council Vice President*****

QUESTIONS OR TO PRE-REGISTER FOR THIS EVENT, CALL TRUST INC: 612-827-6159

"A community action agency that unites and mobilizes congregations and the community to serve and empower our neighbors"

9 Rustic Lodge West, Minneapolis, MN 55419

(612) 827-6159 | trust@trustinc.org | www.trustinc.org



February 06, 2022

RLC Annual Meeting

Following The 9:15 a.m. Worship in the Sanctuary

Please join us for our annual congregational meeting after worship when we discuss what is happening behind the scenes as well as share plans for our future. You are needed!

JANUARY 16 & 23

Following The 9:15 a.m. Worship there will be two informational meetings for discussion and conversation as we prepare for vote on the 2022 annual budget and design dreams for RLC's future.



INFORMATION MEETINGS



From Pastor Brian Mundt

Our gospel last Sunday was John 1:1-18. The sermon centered around John 1:14, "The Word became flesh and camped among us." Which made me think of the People of God out camping with God in the wilderness, for 40

years, while God led them to the Promised Land, via this labyrinth-like route. Life is rightly compared to a journey.

We find comfort in that: that there is a destination; that while we're not there yet, we know we'll get there; and that if we're not too sure how we're doing right now, we remember that God is with us, and that is enough for now. That sure feels like life during a pandemic!

Then I remembered that once the People of God finally arrived in the Promised Land, and settled down, that things went downhill. They turned in on themselves, and ignored the widow, the orphan, the alien in their land. They forgot God's original blessing, that they are blessed to be a blessing to all the nations.

So, where are we, right now? Are we still on the journey? Or are we settled down and "lookin' out for number one"? Early in the pandemic, it was easy to remember we're on a journey, "of which we cannot see the ending, by paths as yet untrodden, through perils unknown." But now we just entered our third year of the pandemic! And we're no longer happy campers. Like the Israelites in the wilderness often did, some are grumbling and murmuring.

Is RLC overreacting, or not responding strongly enough to the pandemic? Unlike some denominations, we do not have orders from the bishop. They encourage us to follow CDC and MDH guidelines. Yet, each congregation is free to respond as they see fit. For some, it's pretty much back to the way things were before. For others, they're still not meeting in person!

RLC's Congregational Council voted to follow CDC and MDH guidance. Which means when the CDC has transmission in Hennepin County as "moderate" and the new case rate is below 10 cases per 100,000 and the positivity rate is below 5%, then leadership will announce no masking and resumption of communion and fellowship hour.

Currently, CDC has transmission as "high," which means masking when indoors, and social distancing for those not fully vaccinated. Buried in the numbers behind that "high" rating is that the positivity rate is twice what would be to be "moderate"—and the new case rate is ten times what it would be to be "moderate." We're

experiencing extreme case rates at record highs, such as we haven't seen the peak 12 months ago. Hospitalization rates are critical, with 92% of the ICUs full—and 99% of those being COVID patients.

RLC's response to COVID is reasonable and responsible. We are still on the journey. We are called to act with others in mind. This pandemic journey still has a way to go. Hopefully not 40 years. But until then, we "go out with good courage, not knowing where we go, but only that God's hand is leading us and God's love supporting us."

~Pastor Brian bmundt@richfield-lutheran.org

From Mary Beth Weibel



Director of Outreach Ministries

Collaborative – by definition it means working together in partnership with others.

You will hear the word "collaborative" a lot this next year as RLC moves into new models of doing mission and ministry with others in our

community. One of our first big adventures in collaborative ministry will be in the January 15 MLK Weekend "Cold Weather Pack" event highlighted on the cover of this newsletter. It is a chance for us to serve neighbors in need in our community. It will be a short two-hour event that will include **Key Note Speaker, Andrea Jenkins, Vice President of the Minneapolis City Council**, as well as a representative of Simpson Housing Services – the recipient of our cold weather kits. And we will pack 360 kits. It is a chance for you to do something in partnership with others in our community – with safety protocols in place for all ages and abilities.

But what about Covid variants? RLC continues to practice stay safe MN protocols. This event is no different. Like Sunday morning worship, Fall Craft Fair or synod gatherings - we follow recommendations from CDC and MDH. We will spread out in the Fellowship Hall and hallways with good air flow and social distant design to the packing space. We ask that everyone be masked while in the RLC facility. There will be no food or beverage served. People are encouraged to join us in those same ways they engage with community life at their own comfort level. Together we can live the legacy of Dr. Martin Luther King Jr as we answer life's most urgent and persistent question "What are you doing for others?" and still engage safely with the needs of others. I hope you will be a part of the team **on January 15 from 10:00 – noon** at RLC. Peace to your day!

~Mary Beth mbweibel@richfield-lutheran.org

From Bonnie Nichols

Office Administrator



Mark your calendar –
January's **WELCA** meeting will
be held on **Tuesday, January
18th** at 2:00 p.m. in the Mary

Martha Room.

~Bonnie

bnichols@richfield-lutheran.org

Happy Birthday to You!

1/1 Kurt Falkman
1/2 Betty Solensten
1/8 Patricia Swanson
1/13 Marie Koenig-Kerber
1/14 LaVerne Meixner
1/15 Judith Peterson
1/20 Jerlyn Missling
1/22 Dick Dullum
1/23 Sharon Loney
1/27 Diane Flom
1/28 Karen Krouch
1/29 Alice Krouch



*May your special day be filled
with God's richest blessings!*



DAILY BIBLE READINGS

DAILY BIBLE READINGS FOR THE
NEXT TWO WEEKS:

Wednesday, January 5. Ephesians 1:3-14
Thursday, January 6. Matthew 2:1-12
Friday, January 7. Isaiah 60:1-6
Saturday, January 8. Ephesians 3:1-12
Sunday, January 9. Luke 3:15-17, 21-22
Monday, January 10. Isaiah 43:1-7
Tuesday, January 11. Psalm 29
Wednesday, January 12. Acts 8:14-17
Thursday, January 13. Isaiah 62:1-5
Friday, January 14. Psalm 36:5-10
Saturday, January 15. 1 Corinthians 12:1-11
Sunday, January 16. John 2:1-11
Monday, January 17. Acts 4:8-13
Tuesday, January 18. Matthew 16:13-19
Wednesday, January 19. 1 Corinthians 10:1-5

JUST TO RECAP

As we move
toward 2022, here
is some reminders
and save the date
information – just
to recap!!!

- **Offering Envelopes for 2022** are now available and located on the Hospitality Desk in the church Narthex.
- **The Mitten Tree Gifts of Warmth:** We welcome donations of hats, scarves, gloves and yes...MITTENS ALL WINTER LONG! Let's fill the tree over and over again into the new year! You can drop your donations off in the RLC Office. Thank you.
- **The 2021 reports** for the RLC Annual Report are due to the church office **IMMEDIATELY** via email to: bnichols@richfield-lutheran.org
- **January 15 – 10:00 – noon**, honor the legacy of Dr. Martin Luther King, Jr. with a morning of service at RLC.
- **January 16 & 30** – informational sessions on the 2022 annual budget and renovation details following The 9:15 a.m. worship.
- **February 06** – Congregational Annual Meeting following The 9:15 worship in the Sanctuary.
- **FEB 14** – start now - make Valentine Day Cards for senior shut-ins in our community. RLC is collecting for distribution to area seniors. Bring "for a special friend"



**WEEKLY BIBLE
STUDY ONLINE WITH
PASTOR BRIAN
RESUMES**

JANUARY 05

Wednesdays @ 1:00 p.m. using Zoom Video
Meeting

Link: <https://us02web.zoom.us/j/89753063690>

Week of January 2, 2022

Daily Bible Readings

Sunday: Genesis 1-5

Monday: Genesis 6-12

Tuesday: Genesis 13-18

Wednesday: Genesis 19-23

Thursday: Genesis 24-28

Friday: Genesis 29-32

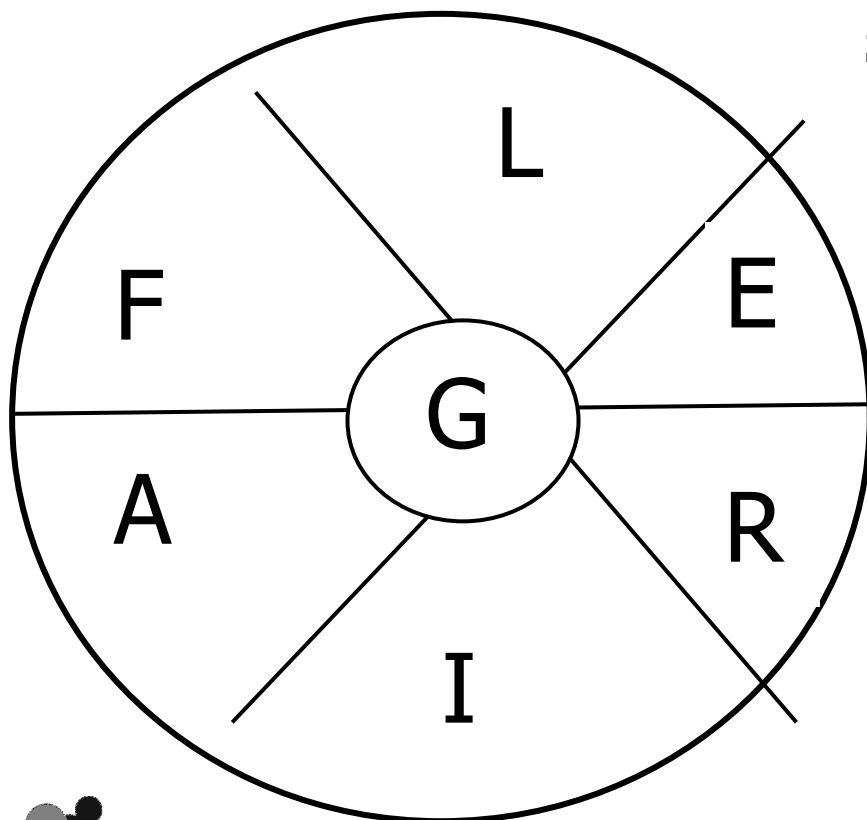
Saturday: Genesis 33-36

A Thought for the New Year

*Tomorrow is the first blank page of
a 365-page book.*

Write a good one! —Brad Paisley

SPELLING WHEEL



DIRECTIONS: How many common words of three or more letters can you form using the letters in the wheel to the left?

EACH WORD MUST CONTAIN THE LETTER G.

Can you find the word that has seven letters in it? Suggested answers are below.

10 words =
Good
14 words =
Excellent
17+ words =
Genius!



VERSE TO REMEMBER

I will bless you; I will make your name great, and you will be a blessing.

—Genesis 12:2 (NIV)

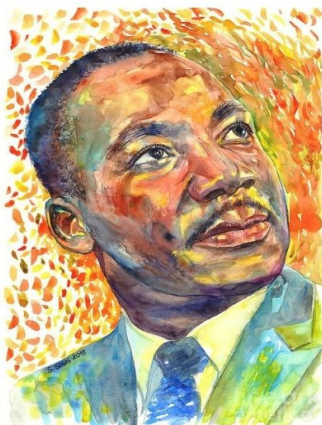
ANSWERS: glare, lager, agile, grail, large, regal, grief, girl, rage, gale, flag, gear, fig, age, gal, rag, leg, lag. The seven-letter word is: fragile.

January 2022						
S	M	T	W	T	F	S
						1
2	3	4	5	6	7	8
9	10	11	12	13	14	15
16	17	18	19	20	21	22
23	24	25	26	27	28	29
30	31					

RLC FRIENDS AND FAMILY - PLEASE HELP US ADVERTISE FOR THIS IMPORTANT COMMUNITY EVENT.

Post the attached printed flyer or invite others electronically by copy/paste event design .jpeg into emails, face book groups and other social media sites.

Thank you!



Living the Legacy...

DR. MARTIN LUTHER KING, JR. DAY OF SERVICE EVENT

*Be community with the community!
Serve others by packing cold weather kits
for neighbors in need in our community.*



10:00 a.m. - noon Saturday January 15, 2022



Host Site: Richfield Lutheran Church

8 W. 60th Street Minneapolis MN 55419 (across from CUB Foods)

**A free service opportunity for all ages and all abilities, combined with
speakers from community partners**

**KEY NOTE SPEAKER: Minneapolis City Council Vice President,
Andrea Jenkins**



Sponsored by TRUST Inc.

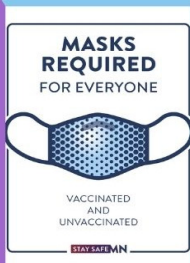
*"A community action agency that unites and mobilizes congregations
and the community to serve and empower our neighbors"*

9 West Rustic Lodge Minneapolis MN 55419

QUESTIONS? Call: 612.827.6159

Help us plan space for this packing event

**Pre-register your attendance or group at 612-827-6159
or just join us January 15th @ 10:00 a.m.**



***"Life's most persistent and urgent question is,
'What are you doing for others?'" ~Dr. Martin Luther King, Jr.~***