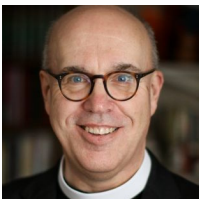


Richfield Lutheran Newsletter

MAY 2023



By Pastor Brian Mundt
bmundt@richfield-lutheran.org



Ruminations from the Pastoral Pasture

Easter. The Season of Easter goes on for seven Sundays—a “week” of Easters! And ends with Pentecost, literally, Greek for the “fiftieth” day after Easter. It takes that many repetitions for the resurrection to sink in. And then we get six months, or “the long, green season” when the readings are all about us. Half the year, from Advent through Christmas through Lent through Easter, the readings are about Jesus. Then the reading are about what it means to be the church.

Worship Survey. We surveyed folks on March 19 and 26 about returning to pre-pandemic worship practices around communion, passing the peace, and offering. A clear majority favors returning to receiving communion at the rail. As soon as we use up the little plastic chalices, we’ll experiment with how best to do that. A clear majority favors not having the ushers pass the offering plate. And a majority favors passing the peace. We’ll experiment with ways to do that appropriate to our size.

Worship Setting Ten. We’ve been using Setting Ten for several months now and have learned the variations for Lent and the two Canticles of Praise. Now we’ll be adding in brief hymns for the offertory and for after communion.

Hybrid Worship. If you cannot attend worship in-person, or if you miss a Sunday morning, our recorded services are for you. If you have a computer or smart phone, you can watch our video worship via our website (Richfield-lutheran.org), YouTube, or Facebook. If you do not have a computer or smart phone, you can listen to our recorded services by calling 612-474-4974. These services are available 24/7!

8W 60th Street
Minneapolis, MN 55419

CHURCH OFFICE:
(612) 861-2265

WEBSITE:
www.richfield-lutheran.org

VIDEO WORSHIP on YOUTUBE:
[Richfield Lutheran Church](#)

AUDIO WORSHIP:
(612) 474-4974

ONLINE SERMONS:
Go to [Resources](#) on our website

RLC FACEBOOK:
[Richfield Lutheran Church](#)

CELC FACEBOOK:
[Creative Early Learning Center @RLC](#)





Upcoming Services and Events:

Worship

- April 28-29 Synod Assembly
- Sunday, April 30 9:30 Worship
- Sunday, May 7 9:30 Worship w/communion
- Sunday, May 14 9:30 Worship
- Sunday, May 14 **Mother's Day**
- * Tuesday, May 16 WELCA Mtg @ 2:00
- Sunday, May 21 9:30 Worship w/communion
- May 22 - June 4: Pr Brian on sabbatical
- Pentecost Sun., May 28 9:30 Worship
- Monday, May 29 Memorial Day

RLC/CELC Offices Closed



Richfield Lutheran
Newsletter
May 2023

Sabbatical. After five years in a congregation, pastors take sabbaticals. Not vacation, but a time to recharge and renew, generally in some form of extended retreat. Sabbaticals are typically for three months. For a part-time pastor (I'm 75% part-time), six weeks is common. So, the time away is not disruptive, I'm taking it in three blocks of two weeks, in May, July, and September. In case of funerals, I'll be available.

Theater! Theater returns to Richfield Lutheran this summer. Lisa Borneman's Hoi Polloi Players have a production in August. Stay tuned for details!

Pastoral Care. If you are in the hospital, or if you are shut-in and desire to receive holy communion and a pastor's visit, please let the office know!

Jesus loves you, and so do I,

-- Pastor Brian



Stewards of Money. Money is a powerful force in our lives. Jesus says that what we do with our money has the ability to take our heart with it (Luke 12:34). God cares about what we do with 100% of our money, not just the fraction that we give to the church. How do we steward all of our money and make sure that the ways we use money aligns with our values? Read Luke 12:22-34 and Matthew 19:16-26.



By Meggy Wagner

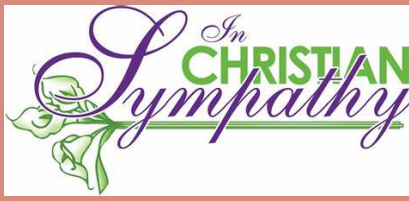
Renovation Project Manager

Patience is a virtue, and unfortunately, it's not one of my biggest strengths... (but you knew that already!) That's why it has been painful to go back to the drawing board after the State Fire Marshall in January required us to include a sprinkler system in the building, even though the City Fire Marshall and Building Department had ok'ed our original plan and issued our permit. Since then, we have been re-planning and re-permitting and re-pricing our project. Now, I'm very happy to report that we have a new plan that has been approved by the City (again), and that we are (finally!) starting construction in early May!

As you remember, we will add an ADA compliant elevator to the childcare wing, which will be located in the Courtyard. This will change the North end of the Library, as well as the North end of the main hallway. The Sunday School office will be converted into the main childcare office, and the East entrance will become the main entrance for childcare, with a reception desk in that end of the hallway. These 2 projects will be ongoing throughout our construction phase, which we expect to last through August.

The rest of the renovation will happen in phases, in order not to disrupt our ongoing operations: Phase 1 will be renovation of the lowest level bathrooms in the childcare wing to be ADA compliant, and the conversion of the old costume storage into a new staff break room.

Phase 2 will be the renovation of the current infant room, the conversion of the South Coatroom into an ADA compliant bathroom + laundry room, and the renovation of the South hallway (floors, ceilings and paint). Also in Phase 1 is the renovation of the current Happy Faces classroom.



We extend our Christian sympathy to the family and friends of Pastor Patricia Hawley who passed away on 4/8/23. Pastor Pat served at RLC from 1984 - 2004.

Blessed be her memory



May Birthdays

5/5 Ida Mae Cornelius
5/5 Kenneth Huntington
5/13 Rodger Thuras
5/15 Robert Yahr
5/16 Lisa Borneman
5/17 Paul Wittig
5/18 Fred Lumbar
5/20 Doug Bergeson
5/23 Mary Sage
5/24 Sheryl Schendel
5/28 Marilyn Yahr
5/31 Ken Ask



Richfield Lutheran
Newsletter
May 2023

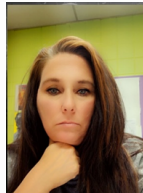
Phase 3 will be the lower childcare level: both toddler rooms and the muscle room, as well as the main bathrooms for the children on that level.

Phase 4 will be the conversion of the current childcare office space into a classroom, after the office has successfully moved into the new space in the Sunday School room.

The timing for the Library, Mary Martha Room, main hallway, main church office (Bonnie's office), and kitchen hallway schedules will be decided as we go along. Given our revised budget for the sprinkler system, we will determine the final renovation scope of those spaces in the coming weeks.

Thank you for your patience as we all work together to refresh our spaces and set the course for successful future ministries!

Meggy Wagner
Renovation Project Manager



Creative Early Learning Center

We would like to introduce you to the amazing teachers we have helping our children grow and develop every day. We are going to start with the teachers we have in our older toddler classroom (Tigers room). We have asked the Teachers to write about themselves. Enjoy learning about our beautiful Teachers.

Denise Hagen, Director



Hello, my name is Tina Dilworth. I studied education and Mathematics at The College of St. Catherine. I have been working in the field of Education since 2000. I have been working with Toddlers since August of 2004. In my spare time I love to hang out with my family. I love all things Minnesota Lynx! I love camping, hiking, and just about anything in nature. As well as traveling to warm tropical places. I started working at Creative Early Learning Center on January 13, 2023. I am looking forward to working with each child and their families.



Hi, my name is Asia McSwain. I grew up and live in this neighborhood, I have always loved working with young children. I received my CDA (child development associates credential) in 2019. I have worked in childcare since 2003. In my spare time I enjoy being with family. I began my journey at Creative Early Learning center in

August 2022.

Fun Fact: Ms. Asia and Ms. Tina have been teaching Toddlers for the past 14 years and 9.5 of those years were in the same classroom! And we are lucky to have them both at our center. Together again 🤝



Sunday, May 14th



Volunteers are still needed for a variety of ministries at RLC.

Let us know if you can help!

AV Operators
Ushers
Meals on Wheels Drivers

Readers
Funeral Lunches
Hosts for Coffee Hour

Newsletter

About our Newsletter

We try to make the RLC Newsletter available and easily accessible to all our members and friends. Here is a reminder of the way we distribute the newsletter:

- Physical copies are mailed to members with no e-mail addresses. (or if they simply wish to receive a hard copy in the mail).
- Members with e-mails are sent a pdf of the newsletter
- Printed copies are available in the office.
- Available on our website.

Contact the RLC Office if you have any questions.



Richfield Lutheran
Newsletter May
2023



Daily Bible Readings for April:

Monday, May 1

[John 14:8-14](#)

Tuesday, May 2

[Hebrews 13:20-21](#)

Wednesday, May 3

[Jeremiah 23:1-8](#)

Thursday, May 4

[Psalm 31:1-5, 15-16](#)

Friday, May 5

[Exodus 3:1-12](#)

Saturday, May 6

[Jeremiah 26:20-24](#)

Sunday, May 7

[John 14:1-14](#)

Monday, May 8

[Psalm 102:1-17](#)

Tuesday, May 9

[Proverbs 3:5-12](#)

Wednesday, May 10

[John 8:31-38](#)

Thursday, May 11

[Psalm 66:8-20](#)

Friday, May 12

[Genesis 7:1-24](#)

Saturday, May 13

[John 14:27-29](#)

Sunday, May 14

[John 14:15-21](#)

Monday, May 15

[Luke 6:12-16](#)

Tuesday, May 16

[1 Peter 3:8-12](#)

Wednesday, May 17

[John 16:16-24](#)

Thursday, May 18

[Luke 24:44-53](#)

Friday, May 19

[Esphesians 2:1-8](#)

Saturday, May 20

[2 Kings 2:13-15](#)

Sunday, May 21

[John 17:1-11](#)

Monday, May 22

[Psalm 99](#)

Tuesday, May 23

[1 Peter 4:7-11](#)

Wednesday, May 24

[1 Kings 8:54-65](#)

Thursday, May 25

[Psalm 33:12-22](#)

Friday, May 26

[Romans 8:14-17](#)

Saturday, May 27

[John 7:37-39](#)

Sunday, May 28

[John 20:19-23](#)

Monday, May 29

[Psalm 104:24-35](#)

Tuesday, May 30

[Romans 8:26-27](#)

Wednesday, May 31

[Luke 1:39-57](#)