

Richfield Lutheran Newsletter

FEBRUARY 2025



By Pastor Charlie Ruud
cruud@richfield-lutheran.org

*...Jesus Christ, who lives and reigns with you and the Holy Spirit, **one God, now and forever.***

If you've been a part of the church for a while, you'll likely recognize the above ending to many prayers. If you're like me, you might not think too deeply about the phrase each time. Still, recently it strikes me how powerful that brief confession is.

We worship one God.

It recalls a favorite scene of mine from the movie, Rudy (1993), a based-on-true-events story about a young man, Dan "Rudy" Ruettiger, who despite his diminutive stature and deficient talent, beats all odds to realize his boyhood dream of playing football at the University of Notre Dame. Rudy regularly visits a kind priest who helps him along the way. At one point when Rudy continues to struggle with deep, difficult questions, the priest finally says with a smile, "Son, in 35 years of religious studies, I've come up with only two incontrovertible facts. There is a God. And... I'm not him."

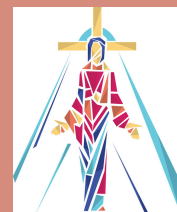
I love that line because there's both conviction and freedom in it. The conviction, there is a God. One God. Many in the recovery community use the language of a "higher power" and I think it is so meaningful because it is an admittance there indeed is a power beyond and outside ourselves with whom we are in relationship.

And so, too, we are not God...which also means neither is anyone else. No rulers, politicians, presidents, dictators, celebrities, tech moguls, billionaires, or any human powers of this world may claim that title nor deserve our worship or ultimate fealty.

Both those assertions are worthy of holding close, and perhaps especially in times of great discernment, trial, and confusion. It grounds us in humble faith and at the same time allows us the freedom to continue to learn, discern, experience, and receive who and how God is truly made manifest in the world. Today, as people of faith we freely proclaim, "You alone, O Lord, are our God."

This month, I hope you continue to follow the story of Jesus as God is revealed to us in worship. Note that our recorded worship services are now being made available weekly online, posted sometime on Mondays. Also, mark your calendars for our congregational annual meeting taking place post-worship on Sunday, February 23.

Pastor Charlie Ruud



8W 60th Street
Minneapolis, MN 55419

CHURCH OFFICE:
(612) 861-2265

WEBSITE:
www.richfield-lutheran.org

VIDEO WORSHIP on YOUTUBE:
[Richfield Lutheran Church](#)

ONLINE SERMONS:
Go to [Resources](#) on our website

RLC FACEBOOK:
[Richfield Lutheran Church](#)

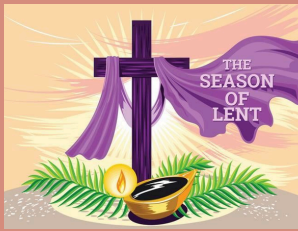
CELC FACEBOOK:
[Creative Early Learning Center @RLC](#)





Upcoming Services and Events:

- Sunday, February 2: 9:30
Worship w/communion
- Sunday, February 9: 9:30
Worship
- Friday, February 14: Happy
Valentine's Day!
- Sunday, February 16: 9:30
Worship w/communion
- Tuesday, February 18: Trust
Inc. Workshop 'Living Life
from the Heart' 11:30-1:30
- Sunday, February 23: 9:30
Worship followed by RLC
Annual Meeting



LOOKING AHEAD

Ash Wednesday - 4:00pm - March 5

Wednesday, Midweek Lenten Service
begins every Wednesday at 1:00 pm
from March 12-April 9

Palm Sunday	April 13-9:30am
Maundy Thursday	April 17-4pm
Good Friday	April 18-4pm
Easter Sunday	April 20-9:30am



Richfield Lutheran
Newsletter
February 2025



Bible Study Online with
Pastor Charlie

WEDNESDAYS @ 1:00 p.m. using Zoom Video
Meeting.

Link: <https://us02web.zoom.us/j/89753063690>



Sunday, February 23

10:30 a.m.

Fellowship Hall

Your attendance is important



By Susan Anderson
Council President

Hard to believe we are already into the second month of the new year.
A few dates to note.

RLC's Annual Meeting will be held on February 23rd following worship. The Annual Report will be available on Sunday, February 16th for those who want to read through it before the meeting.

On Thursday, February 6th, RLC folks will be handing out coffee and donuts to parents as they drop off their children for CELC. This idea first arose about four years ago when a small group from RLC were participating in Faith Practices and Neighboring Practices through the synod. At that time, we didn't have enough volunteer bandwidth to get it off the ground. Now we have a number of volunteers in place and plan to meet and greet our CELC neighbors that morning beginning at 7:30. If anybody is interested in joining, let me know (anderwood3@hotmail.com or 952-456-1948). Most drop-offs are between 7:30 and 8:30 so we ask you to be there for about an hour.

IT'S OFFICIAL!! We have officially installed Charlie Ruud as our lead Pastor at Richfield Lutheran Church in Minneapolis! We are so blessed to have him here! Welcome Pastor Charlie!





February Birthdays

2/2 Pauline Ronneberg
 2/3 Bonnie Nichols
 2/8 Francis King
 2/12 Carol Mannerter
 2/13 Harriet Berg
 2/14 Linda Falkman
 2/16 Ann Johnson
 2/17 Joyce Malaske
 2/19 Ralph Swenby
 2/20 Scott Cumberland
 2/21 Bruce Bachman
 2/22 Sherie Swanson
 2/26 Catherine Salin



Our Christian Sympathy to the family and friends of Marilyn Long who passed away on Tuesday, January 14, 2025. Visitation was held at Gill Brothers Funeral

Home on Tuesday, January 28th. A funeral service is being planned for a later date.

Blessed be her memory.



If you are interested in becoming part of the Prayer Chain Ministry at RLC, please contact Betty Solensten a 612-869-5262 or contact the RLC Office for more information.



Richfield Lutheran
 Newsletter
 February 2025



By Robbi Moore
 Parish Nurse

FEBRUARY IS
 AMERICAN
 HEART
 MONTH



Happy Valentines and Happy Heart Month.

This is that time each month that I ask each of you to give extra thought to that fantastic pump that keeps each of us going. It is easy forgotten as we usually don't hear it pounding in our chests but it is there working day and night for benefit.

Heart health or Heart Disease are not just one diagnosis but many all centered on that one organ. The most common is High blood pressure that with regularly taken medication, diet, gentle exercise and routine MD care usually has a good outcome. The most serious, hardest diagnosis and poorest resolution would be sudden cardiac arrest (sudden death). That diagnosis has of a 18 to 20 % of survival and rarely if not in a hospital at time of the arrest. Between these 2 things are many many different ailments of the beautiful God made pump. There are at least 11 different cardiologist specialties a MD can study and they are supported by nurses, techs support staff, imaging specialists and exercise therapists to name just some. This month I ask you to prayerfully remember all the members of the Heart teams through the country and remember, the training and research they participate in daily.

I will have red Heart pins for you this month to remember these stewards as they do God's Work and share their skills and talents. I will be happy to discuss any questions you have about Heart health this month in addition to any questions at any time as your Parish Nurse.

In His Service
 Robbi , your Parish Nurse



Join us as we host Trust Inc. for a 'Teach and Train Tuesdays' workshop on Tuesday, February 18th at 11:30am. The workshop is "Living Life from the Heart" The event is scheduled from 11:30 to 1:30 pm and includes a complimentary lunch. Be sure to pre-register by calling the number listed or sign-up in the RLC Office by January 16th.

WELCA will hold it's February meeting immediately following the workshop.



**TRUST INC
 INVITES YOU TO
 TEACH &
 TRAIN
 TUESDAYS**



FEBRUARY 18, 2025

11:30 A.M. - 1:30 P.M.

**RICHFIELD LUTHERAN CHURCH
 8 W 60TH STREET MINNEAPOLIS MN**



As part of TRUST Incorporated's Share Your Heart month, we warmly invite you to our Teach & Train workshop, "Living Life From the Heart." Just like a balanced diet and regular exercise, nurturing our emotional heart is essential for our overall health and well-being. Join us for an uplifting presentation by motivational speaker Marcy Grams, whose clever insights and wisdom will guide us in living life with joy and a happy heart!

WORKSHOP FEATURES

- HEALTH & WELLNESS SUPPORT
- COMPLIMENTARY LUNCH
- TECHNIQUES AND TRAINING TO BE YOUR BEST AT ANY AGE!

**Pre-registration required
 CALL
 612-827-6159**

Some transportation available to TRUST Inc Clients

Open to all older adults in our community



A Health & Wellness Community Building Initiative of TRUST Inc in partnership with



Newsletter



WE'RE SEEING STARS!!! The stars decorating our building look beautiful! Thank you to the children of Creative Early Learning Center for this great addition to our building!



Winter Fun for our CELC Children!



Newsletter

About our Newsletter

We try to make the RLC Newsletter available and easily accessible to all our members and friends. Here is a reminder of the way we distribute the newsletter:

- Physical copies are mailed to members with no e-mail addresses. (or if they simply wish to receive a hard copy in the mail).
 - Members with e-mails are sent a pdf of the newsletter
 - Printed copies are available in the office.
 - Available on our website.
- Contact the RLC Office if you have any questions.



ONLINE SERVICES ARE BACK!!!

Services, recorded by our new camera setup, are posted on our website and YouTube Channel every Friday at 6:00am.



Richfield Lutheran
Newsletter
February 2025



Daily Bible Readings for February:

Saturday, February 1
1 Chronicles 36:11-21

Sunday, February 2
Luke 4:21-30

Monday, February 3
Luke 2:22-40

Tuesday, February 4
Psalms 56

Wednesday, February 5
Luke 19:41-44

Thursday, February 6
Psalms 138

Friday, February 7
Acts 9:26-31

Saturday, February 8
Judges 3:7-11

Sunday, February 9
Luke 5:1-11

Monday, February 10
Psalms 115

Tuesday, February 11
1 Samuel 9:15-10:1b

Wednesday, February 12
Luke 5:27-32

Thursday, February 13
Psalms 1

Friday, February 14
1 Peter 1:17-21

Saturday, February 15
Jeremiah 17:1-4

Sunday, February 16
Luke 6:17-26

Monday, February 17
Psalms 120

Tuesday, February 18
1 Corinthians 1:12-19

Wednesday, February 19
Jeremiah 22:11-17

Thursday, February 20
Psalms 37:1-11, 39-40

Friday, February 21
1 John 2:12-17

Saturday, February 22
Luke 12:57-59

Sunday, February 23
Luke 6:27-38

Monday, February 24
Psalms 38

Tuesday, February 25
1 Corinthians 11:17-22, 27-33

Wednesday, February 26
Luke 17:1-4

Thursday, February 27
Psalms 99

Friday, February 28
Acts 10:1-8



For God so lo**V**ed the world
that he g**A**ve
His only begotten Son
that who**E**ver
believes i**N** him
shall no**T**
per**I**sh but have
everlasti**N**g
lif**E**.

John 3:16